

Body Builder Guidelines Bulletin



Sales Engineering

Bulletin No	2 2009
--------------------	---------------

Bulletin Title	Park Brake Interlock	LF CF XF
-----------------------	-----------------------------	-----------------

Originator	Kevin Rowlinson	Date	20th February 2009
-------------------	------------------------	-------------	--------------------------------------

Please find retro fit instructions for a Park brake interlock system to be used on DAF chassis fitted with the following body types:-

Tanker type used for the transportation of Fuel, Oils, Bulk Powder.

Chassis mounted Cranes for lifting or grab operation, including use of Hydraulic platforms and Man baskets.

Refuse type operation.

The part numbers required are as follows:-

WABCO Magnet 3/2 valve W 472 176 316 0

Mini Relay 1670141

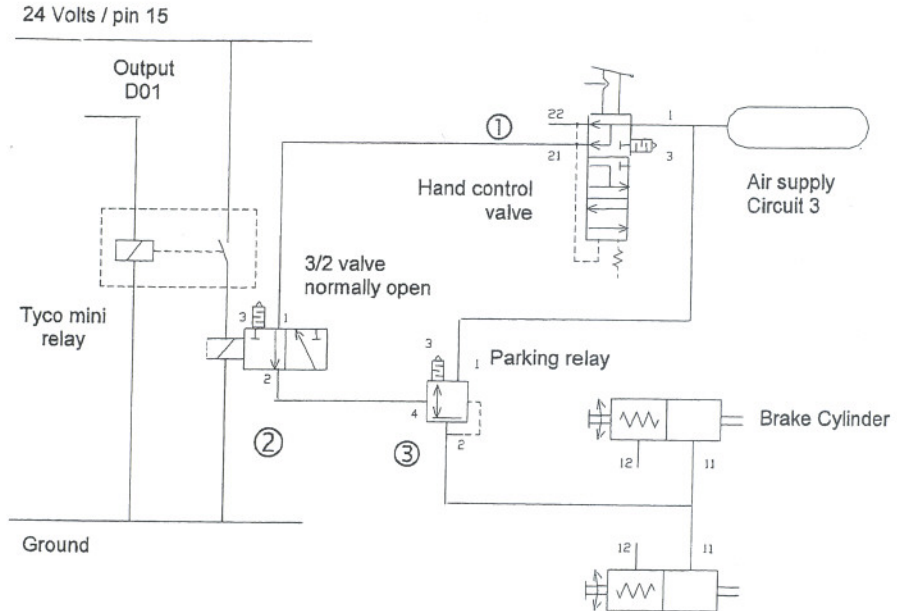
The body builder must provide a 24v signal from his equipment to the mini relay pin 86.

If pin 86 is energised then the 3/2 valve is in the exhaust position and the spring brakes cannot be released until the voltage on pin 86 is removed.

Please mount the 3/2 valve in the chassis frame forward of the drive axle, in a position that will not cause a hindrance to other wiring, piping or hydraulic piping.

Please ensure that all additional components are located following the instructions in the DAF Bodybuilder Guidelines.

Piping and Wiring Diagram



I nominal of 3/2 valve = 0,69 A

I out max BBM = 0,5 A

I mini relay = 0,1 A