



**VCA Headquarters**  
1 The Eastgate Office Centre  
Eastgate Road  
Bristol, BS5 6XX  
United Kingdom

Switchboard: +44 (0) 117 951 5151  
Main Fax: +44 (0) 117 952 4103  
Email: [enquiries@vca.gov.uk](mailto:enquiries@vca.gov.uk)  
Web: [www.vca.gov.uk](http://www.vca.gov.uk)

---

THE UNITED KINGDOM VEHICLE APPROVAL AUTHORITY

---

COMMUNICATION CONCERNING THE GRANTING OF EEC TYPE APPROVAL RELATING TO REAR UNDERRUN PROTECTION AND LIQUID FUEL TANKS FOR MOTOR VEHICLES AND THEIR TRAILERS PURSUANT TO EEC DIRECTIVE 70/221/EEC AS LAST AMENDED BY 2006/20/EC

---

Type Approval No: e11\*70/221\*2006/20\*5031\*02

Reason for Extension:

- 1, Update approval to 2006/20/EC
- 2, Addition of chassis with body data

**SECTION I**

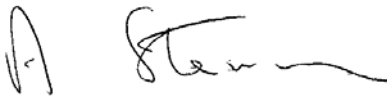
- 0.1 Make (trade name of manufacturer): DAF
- 0.2 Type and general commercial description(s): LF45
- 0.3 Means of identification of type, if marked on the vehicle<sup>(2)</sup>: Vehicle Identification Number Code XLR??45??????????
- 0.3.1 Location of that marking: Vehicle Identification Number stamped on RH chassis frame side member adjacent to front axle and stamped on Vehicle Identification Number plate mounted on LH door aperture
- 0.4 Category of vehicle<sup>(3)</sup>: N2
- 0.5 Name and address of manufacturer:
- DAF Trucks NV  
Hugo vd Goeslaan 1  
5600 PT Eindhoven  
The Netherlands
- 0.7 In the case of components and separate technical units, location and method of affixing of the EC approval mark: Not applicable



0.8 Address(es) of assembly plant(s):

Leyland Trucks Limited  
Croston Road  
Leyland  
Lancashire  
PR26 6LZ  
United Kingdom

## SECTION II

1. Additional information (where applicable): see Addendum
2. Technical service responsible for carrying out the tests: Vehicle Certification Agency
3. Date of test report: As before and 02 October 2008
4. Number of test report: As before and VSJ193243C
5. Remarks (if any): see Addendum
6. Place: BRISTOL
7. Date: 3 NOVEMBER 2008
8. Signature:  A. W. STENNING  
Head of Technical and Quality Group
9. The index to the information package lodged with the approval authority, may be obtained on request.

**ADDENDUM**

to EEC Type Approval Certificate No: e11\*70/221\*2006/20\*5031\*02

concerning the type approval of a vehicle with respect of a rear underrun protective device  
(Directive 70/221/EEC as last amended )

1. Additional information
    - 1.1 Vehicle category: N2
    - 1.2 The vehicle is not fitted with a rear underrun protection device<sup>(1)</sup> Not applicable
    - 1.3 The vehicle is fitted with a rear underrun protection device<sup>(1)</sup> Yes
      - 1.3.1 The device has been approved as a separate technical unit: No
        - distance from the ground and from the rear of the vehicle: Not applicable
        - approval mark: Not applicable
      - 1.3.2 The device has not been approved as a separate technical unit:
        - width, section depth, distance from the ground and from the rear of the vehicle:
          - width 2082 mm, section depth 100 mm, distance from ground 314 to 548 mm, 15 mm forward of chassis rearmost point. (49 mm allowing for deflection during test)
        - method of affixing: Mounting flanges bolted through chassis side members
5. Remarks: Annex 2 Paragraph 5.3 applies

(1) *Delete where inapplicable*

(2) *If the means of identification of type contains characters not relevant to describe the vehicle, component or separate technical unit types covered by this type-approval certificate, such characters shall be represented in the documentation by the symbol '?' (e.g. ABC??123??).*

(3) *As defined in Annex II Section A to Directive 70/156/EEC.*



**VCA Headquarters**  
1 The Eastgate Office Centre  
Eastgate Road  
Bristol, BS5 6XX  
United Kingdom

Switchboard: +44 (0) 117 951 5151  
Main Fax: +44 (0) 117 952 4103  
Email: [enquiries@vca.gov.uk](mailto:enquiries@vca.gov.uk)  
Web: [www.vca.gov.uk](http://www.vca.gov.uk)

APPROVAL NUMBER: e11\*70/221\*2006/20\*5031\*02

## INFORMATION PACKAGE CONTENTS

### INDEX

**REVISION NUMBER: 02**

Total number of sheets: 6 (Six)

Number of separate drawings: 0 (Nil)

Number of separate photographs: 0 (Nil)

#### Reasons for Extension/Revision:

- 1, Update approval to 2006/20/EC
- 2, Addition of chassis with body data

Revision date  
&  
Office Stamp

Job Number VSJ193243

An executive agency of the Department for Transport



# Information Document

DIRECTIVE: 70/221/EEC AS AMENDED BY 2006/20/EC

## **REAR UNDERRUN PROTECTION**

**DAF LF45**

Approval No. e11\*70/221\***2006/20**\*5031\*02 rev2

Reason for change:

- 1, Update approval to 2006/20/EC
- 2, Addition of chassis with body data

Change to manufacturer's documents:

- 1, Information document page numbers 1 to 3
- 2, Add drawing of updated rear underrun NLHA546



INDEX*2006/20/EC: REAR UNDERRUN*

DESCRIPTION	PAGE No / DRAWING No
Appendix 1	Pages <b>1 to 3</b>
Vehicle - General View	See Drg. No. NLHA 031B
Rear Underrun Device	See Drg. No. NLHA 028A
<b>Updated Rear Underrun Device</b>	<b>See Drg. No. NLHA 546</b>

Note: Contents of this application package shown in **bold**



APPENDIX 1

INFORMATION DOCUMENT No. e11\*70/221\*2006/20\*5031\*02 rev2

In accordance with Annex 1 to Directive 70/156/EEC relating to EC type approval of a vehicle with respect to rear underrun protection.

*(Directive 70/221/EEC, as last amended by Directive 2006/20/EC)*

The following information, if applicable, must be supplied in triplicate and include a list of contents. Any drawings must be supplied in appropriate scale and in sufficient detail on size A4 or on a folder of A4 format. Photographs, if any, must show sufficient detail.

If the systems, components or separate technical units have electronic controls, information concerning there performance must be supplied.

0. GENERAL

- 0.1. Make (trade name of manufacturer): DAF
- 0.2. Type and commercial description: LF45
- 0.3. Means of identification of type: VIN CODE: XLR??45??????????
- 0.3.1. Location of that marking: VIN stamped on RH chassis frame side member adjacent to front axle & stamped on VIN plate mounted on LH door aperture
- 0.4. Category of vehicle: N<sub>2</sub>
- 0.5. Name and address of manufacturer: DAF Trucks NV  
Hugo vd Goeslaan 1  
5600 PT Eindhoven  
The Netherlands
- 0.8. Address of assembly plant: Leyland Trucks Ltd.  
Croston Road  
Leyland  
Lancs PR26 6LZ  
UK



1. GENERAL CONSTRUCTION CHARACTERISTICS OF THE VEHICLE

- 1.1. Photographs / drawings of vehicles: See Drg No. NLHA 031B
- 1.5. Material used for the side members: Steel Hypress 29 450 N/mm<sup>2</sup>

2. MASSES AND DIMENSIONS (in kg and mm)

- 2.3.3. Width of the widest rear axle: 2198mm Min 2280mm Max

2.4. Range of vehicle dimensions (overall)

2.4.1. For chassis without bodywork

- 2.4.1.2. Width (over rear tyres): 2198mm Min 2280mm Max

**2.4.2. For chassis with bodywork**

- 2.4.2.2. Width: 2198mm Min 2600mm Max**

- 2.6. Mass of the vehicle with bodywork, and with coupling device in the case of a towing vehicle of a category other than M1, in running order, or the mass of the chassis with cab if the manufacturer does not fit the bodywork and/or coupling device (including coolant, oils, fuel, 100% other liquids except used water, tools, spare wheel and driver and for buses and coaches, the mass of the crew member (75kg) if there is a crew seat in the vehicle):

2941kg Min                      **12000kg Max**

- 2.8. Technically permissible maximum laden mass stated by the manufacturer (max & min):

6200kg Min                      12000kg Max

Note: All incremental GVMs between 6200kg & 12000kg are covered within this approval



9. BODYWORK

9.1. Type of bodywork: Commercial vehicle cab

9.2. Material used and method of construction: Steel fabrication

9.15. Rear underrun protection

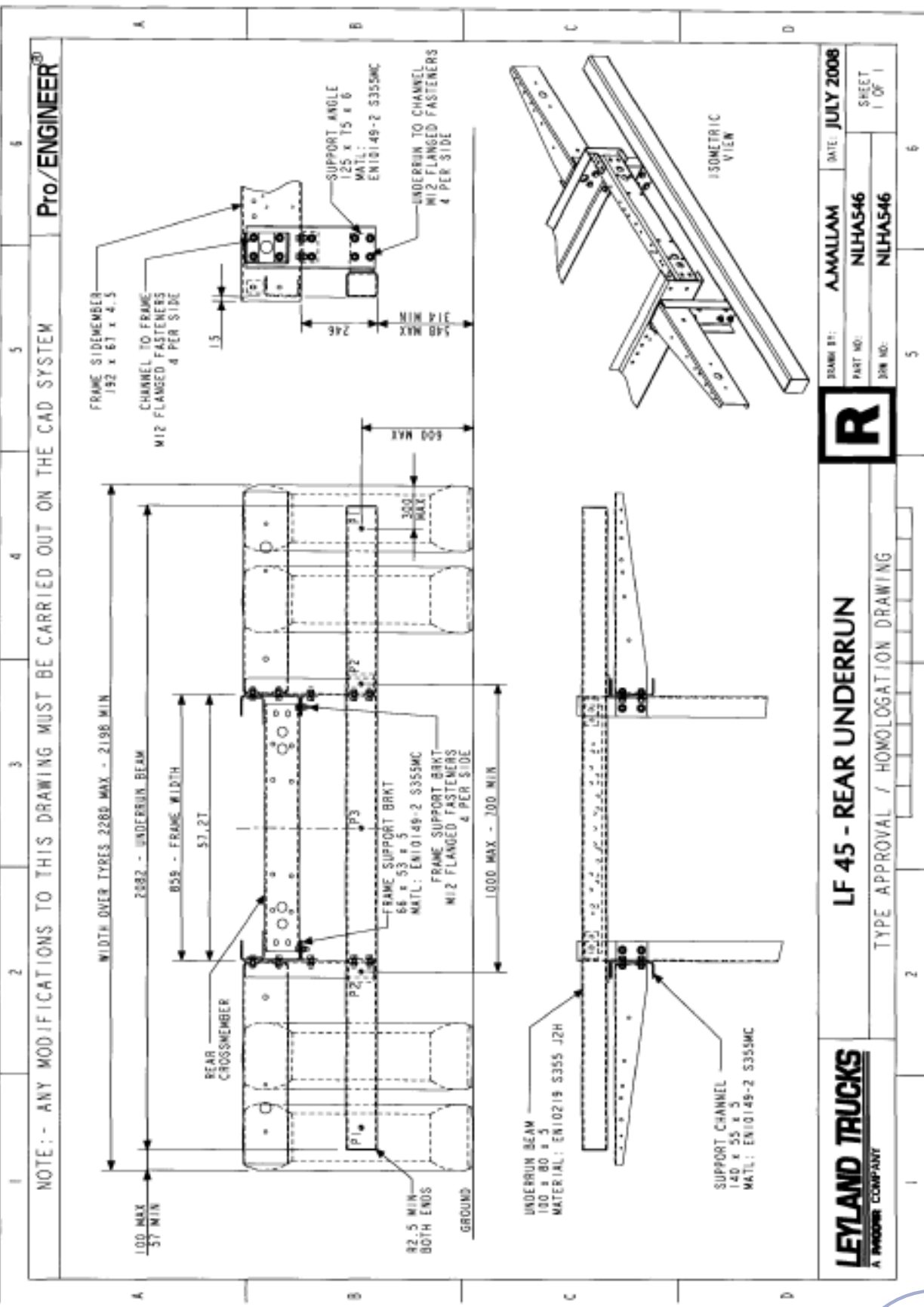
9.15.1. Drgs of the vehicle parts relevant to the rear underrun protection, i.e. drg. of the vehicle and/or chassis with position and mounting of the widest rear axle, drg. of the mounting and/or fitting of the rear underrun protection. If the underrun protection is no special device, the drg. must clearly show that the required dimensions are met:

N/A

9.15.2. In the case of special device, full description and/or drg. of the rear underrun protection (including mountings and fittings) or if approved as an S.T.U. the type approval No.:

See Drg. No. NLHA 028A or NLHA 546





DESIGN BY:	A.MALLAM	DATE:	JULY 2008
PART NO:	NLHA546	SHEET	1 OF 1
DRAW NO:	NLHA546		



**LF 45 - REAR UNDERRUN**

TYPE APPROVAL / HOMOLOGATION DRAWING

**LEYLAND TRUCKS**  
A INOVIA COMPANY

